

INSTRUCTION MANUALS

CD-270 CD-player

CONTENTS

ACCESSORIES	3
CONTENTS	3
SAFETY PRECAUTIONS	4
IMPORTANT SAFETY INSTRUCTIONS	4
IMPORTANT INFORMATION	7
CONNECTIONS TO THE MAINS	8
REMOTE CONTROL	8
FRONT/REAR PANEL	10
AUDIO CONNECTIONS	11
OPERATION AND FUNCTIONS	12
TROUBLESHOOTING	14
TECHNICAL DATA	14

ACCESSORIES

Accessories

- 1 x CD-300 CD-player
- 1 x Remote control
- 2 x Batteries (Optional)
- 1 x Operation Manual

This operation manual supplies all the information that you need to have about your System Fidelity CD-player. Please read this operation manual carefully before you start using the unit!

SAFETY PRECAUTIONS



A triangle with a lightning symbol draws the user's attention to "dangerous voltage" without insulation in the cabinet which may be high enough to entail a risk of electric shock.



A triangle with an exclamation mark draws the user's attention to important instructions for use and maintenance in the accompanying manual, which should be studied.



A symbol for CLASS II (double insulation)

WARNING:

TO MINIMISE THE RISK OF FIRE OR ELECTRICAL SHOCK, DO NOT EXPOSE THE UNIT TO RAIN OR MOISTURE. DO NOT OPEN THE CABINET AS IT CONTAINS DANGEROUS VOLTAGE. ONLY QUALIFIED TECHNICIANS ARE ALLOWED TO CARRY OUT REPAIR AND SERVICE.

CAUTION:

If the plug of the power cord needs to be replaced, it is important that the replacement is identical to the plug to be replaced, or that the new plug has been recommended by the manufacturer.

TO AVOID ELECTRICAL SHOCK, IT IS IMPORTANT TO INSERT THE PLUG CORRECTLY INTO THE SOCKET.

IMPORTANT SAFETY INSTRUCTIONS

WARNING: IT IS IMPORTANT THAT YOU READ AND OBSERVE BOTH THE INSTRUCTIONS IN THIS MANUAL AND THE INSTRUCTIONS ON THE UNIT. KEEP THIS MANUAL FOR FUTURE REFERENCE .

This unit was designed and manufactured with a view to providing maximum safety for the user. Incorrect use of the unit may cause electrical shock or fire. The protection devices built into this unit will protect the user if the procedures below are observed in connection with installation, use and repair. This unit is fully electronic and contains no parts that can be repaired by the end user .

PLEASE DO NOT REMOVE THE CABINET. RISK OF DANGEROUS VOLTAGE. ONLY QUALIFIED AND AUTHORIZED TECHNICIANS ARE ALLOWED TO REPAIR THE UNIT.

Read the manual upon unpacking the unit

Please read the manual carefully and observe all the instructions given.

Power supply

Only the power supply indicated on the rating plate must be used for this unit.

If you are not sure which power supply you have, please contact the distributor or the local electricity supplier.

Earthing or polarisation

If the plug cannot be inserted properly into the socket, or if the plug does not fit, the unit must not be used in your country.

Ventilation

The cabinet is provided with slots and openings to ensure ventilation and reliable operation and to protect the unit against overheating. Do not block or cover these openings. The openings must never be blocked, for instance by placing the unit on a bed, a sofa, a carpet or similar surface .

Heat

Do not place the unit near sources of heat such as radiators, heat registers, ovens or other units that produce heat.

Water and moisture

The unit must not be placed close to water, such as bathtub, wash basin, kitchen sink or laundry tub, in a damp cellar or close to a swimming pools, etc.

Cleaning

Unplug the unit before cleaning. Do not use liquid detergents and aerosol cleaning agents. Please use only a dry cloth for cleaning the unit.

Power cords

Wiring must be organised to prevent people from stepping on the cables and to avoid pinching by objects placed on or beside them. Take special care around sockets and plug boxes and where the power cords leave the unit.

Overloading

Make sure that wall sockets, extension cords and plug boxes are not overloaded as this may lead to fire or electrical shock.

Lightning

Unplug the unit for additional protection during thunderstorms or when the unit is not used for prolonged periods. This will prevent damage to the unit from lightning and power surges.

Penetration of objects and liquid

Never push any foreign objects through the openings into the unit, as they may touch dangerous voltage points or short-circuit parts and thus cause fire or electric shock. Do not allow any liquid to be spilled on or into the unit.

Accessories

Do not place the unit on unstable surfaces such as a trolley, stand, tripod, shelf or table. The unit may fall and injure children or adults or be seriously damaged. Use only trolley, stand, tripod, shelf or table that is very stable or provided with the unit. The unit must be installed in accordance with the manufacturers instructions and by means of installation equipment recommended by the manufacturer.

If the unit is placed on a trolley, the trolley must be moved very carefully. Sudden stops, unnecessary force and uneven surfaces may cause the trolley to turn over.

Loads

Do not place heavy loads on the unit and do not step on it. The load may fall and cause serious injury to persons or damage to the unit.

Damage

Unplug the unit and contact qualified technicians in the following cases:

- A) If the power cord or the plug is damaged.
- B) If liquid has been spilled on the unit or objects have fallen into the unit.
- C) If the unit has been exposed to rain or water.
- D) If the unit does not work properly after adhering to the instructions in the operation manual. Only the settings described in the operation manual

must be made as incorrect setting may result in damage and often will make it difficult for a qualified technician to make the unit work properly again.

E) If the unit has been dropped or damaged in any other way.

F) When the operation of the unit changes drastically, the unit requires service.

Service

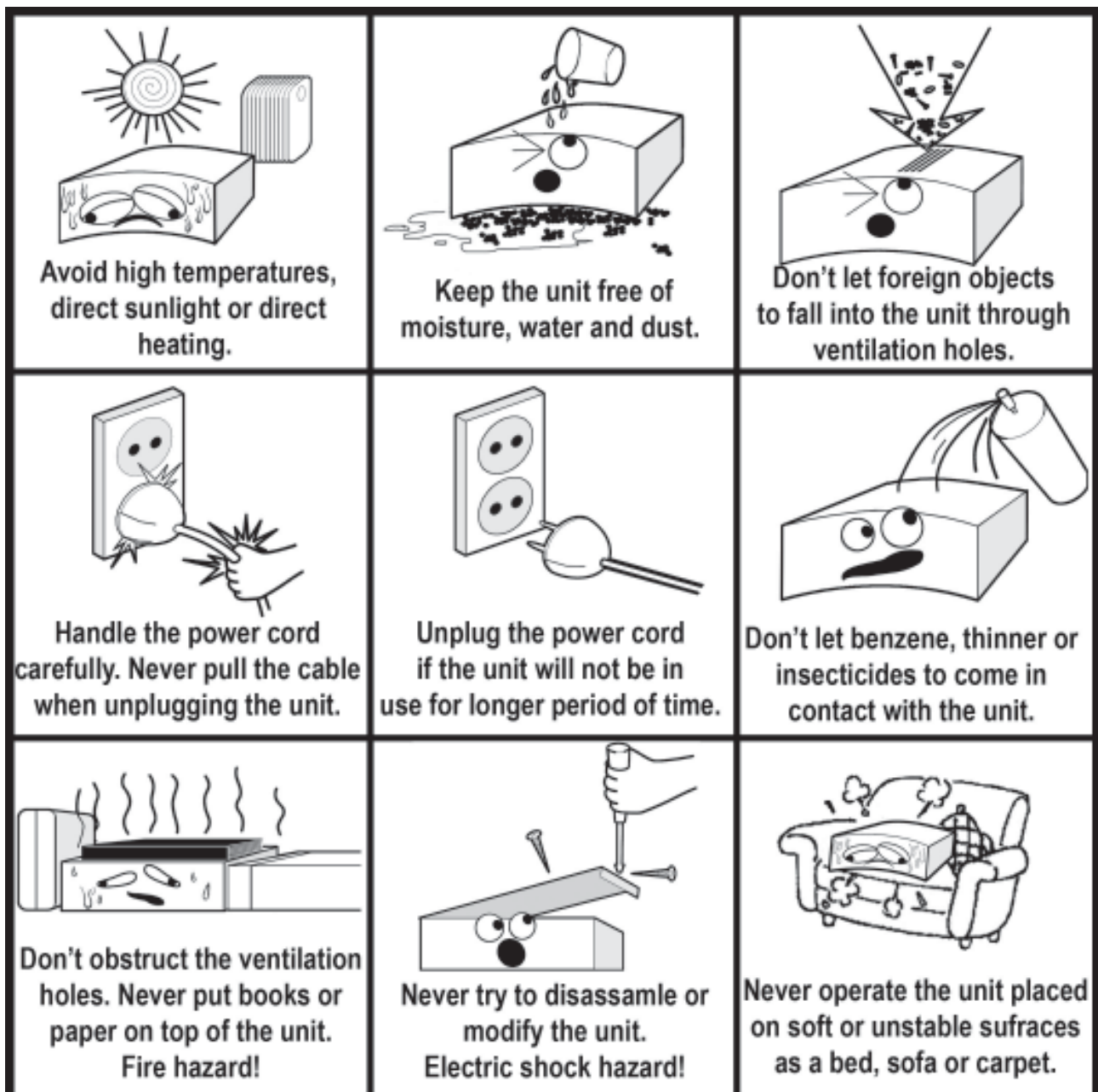
Do not attempt to carry out any service work yourself. By opening or removing the cabinet, you will be exposed to dangerous voltage or other hazards. Any service work should be carried out by qualified technicians.

Spare parts

If spare parts are required, make sure that the service technician uses spare parts specified by the manufacturer or spare parts with the same characteristics as the original. Unauthorised spare parts may cause fire, electrical shock, etc.

Safety check

After service or repairs on the unit, ask the service technician to carry out a safety check to ensure that the unit is ready for use.



IMPORTANT INFORMATION

Handling instructions

The top and back panel of the unit may become warm after prolonged use. This is not due to a defect.

Turn off the power when the unit is not used.

Protect the power cord

Follow the instructions below to prevent abnormal operation, electrical shock, fire or personal injury: Hold the plug firmly when inserting it into the socket.

Avoid heat-producing devices.

Do not place objects on the power cord.

Do not carry out service work on or change the power cord.

Positioning

Do not place the unit in any of the following places:

- In sunlight, close to heat-producing devices or in an enclosed rack;
- In places with high temperatures (40C or more) or high relative humidity (90% or more);
- In dirty or dusty places as some internal parts may be damaged.

Please do not put your fingers or any other objects into the unit

Touching the internal parts is dangerous and may cause injury or damage. Do not open the cabinet. Do not place any foreign matter in the unit.

Interference

Placing the amplifier near a television set, radio or video player may cause poor picture and sound quality. In that case, move the amplifier further away from the television set, radio or video player.

Condensation

Condensation may occur in the following cases:

When the amplifier is moved directly from a cold to a warm place.

When the amplifier is used in a room where the radiator has just been switched on or a place where the cold air from the air-conditioning system is directed at the unit.

If the amplifier is used in the summer in a warm and humid room just after it has been moved from an air-conditioned room.

If there is steam or a high level of humidity in the room.

In case of condensation, the amplifier will not work properly. Turn off the unit. Unplug the unit and leave it for 2-3 hours. The amplifier will then have adapted to the environment and any condensation will have disappeared.

NOTES ON INSTALLATION

Your System Fidelity CD-270 should be placed on a firm, level surface. Avoid placing it in direct sunlight or near sources of heat and damp. Always allow adequate ventilation and don't place it on a soft surface like a carpet. Don't place it in an enclosed position such a bookcase or cabinet that may impede the air-flow through the ventilation holes. The unit shall not be exposed to dripping or splashing and that no objects filled with liquids, such as vases, shall be placed on the unit.

About connection to the mains

Do not turn on the power before all connections have been made correctly.

Check that all connections have been made correctly before turning on the power.

Check that the mains voltage is 230-240V AC50Hz before turning on the power.

Check that all other connections have been made correctly before inserting the mains plug into the wall socket.

Then insert the plug into a suitable socket.

If the unit is to be used abroad, you may need an adapter.

REMOTE CONTROL

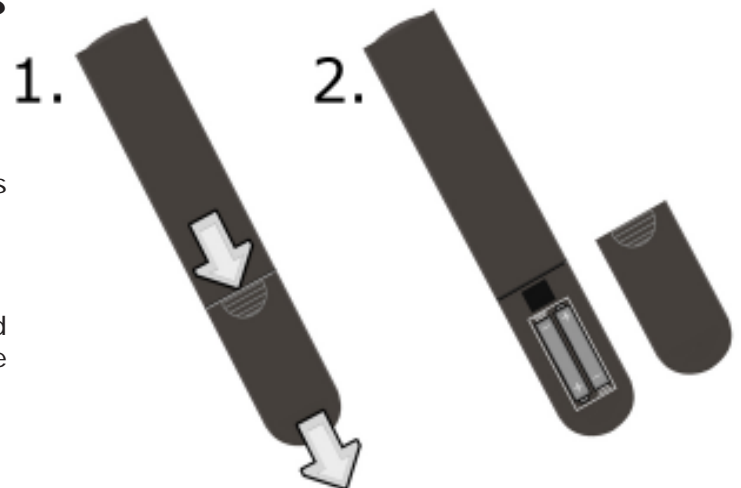
Installation of batteries

Remove the cover at the back.

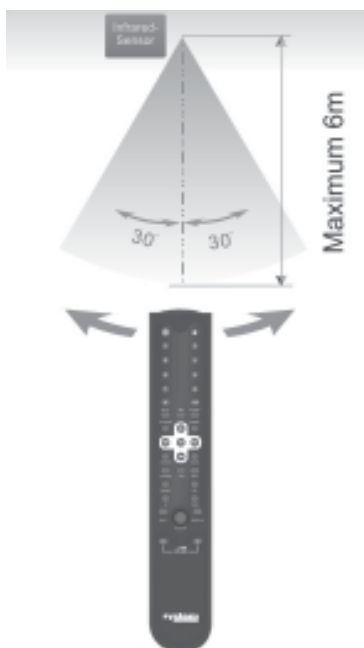
Position two batteries of the type AAA/R03/UM4 in the battery compartment. Make sure that the orientation and polarity of the batteries is correct (see drawing).

Do not mix new and old batteries and do not use different types of batteries.

If the remote control is not used for prolonged periods, remove the batteries from the remote control to avoid corrosion.



Using the remote control



Direct the remote control at the sensor on the front panel of the CD player. When the remote control signal is received, the unit reacts accordingly. The remote control works within a range of 6m.

Sometimes the remote control may not work well in direct strong light. You may have to move the player if it is a problem.

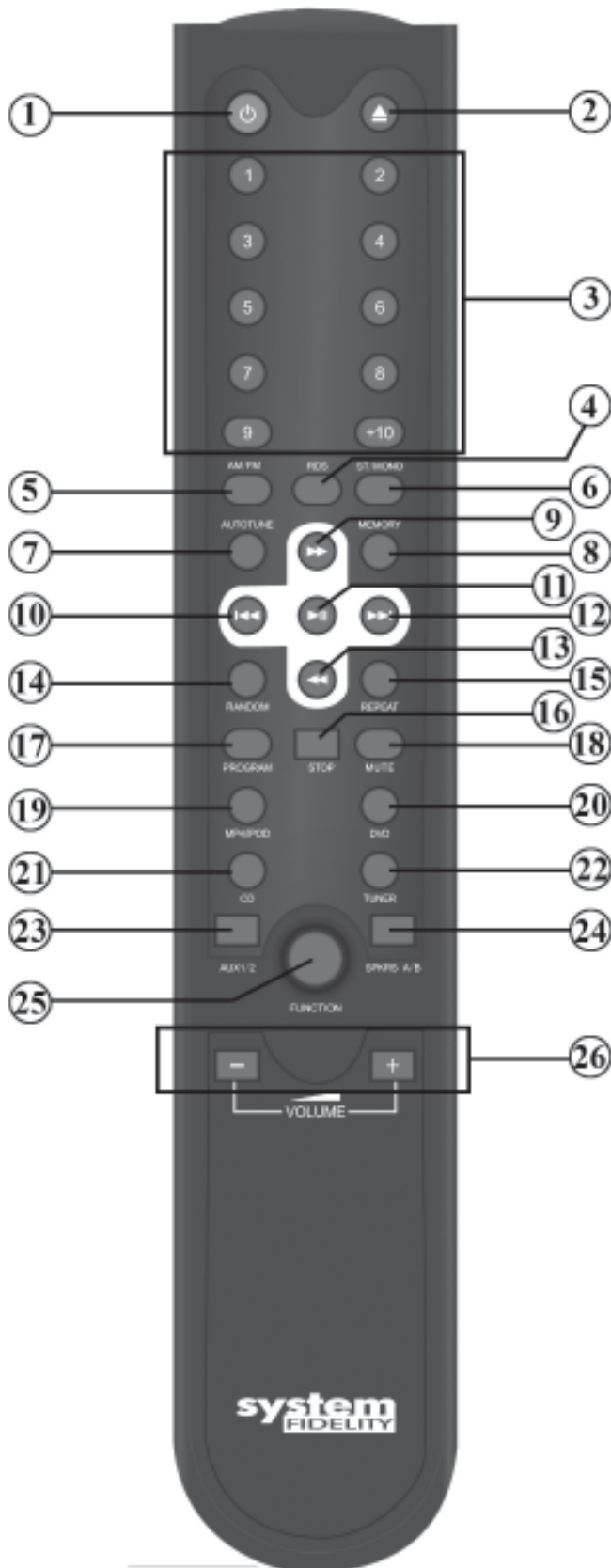
Malfunction may occur if remote controls of some other equipments are used near the CD player.

Do not place any objects on the remote control, as the batteries may become flat if a key is depressed constantly.

Make sure that there are no visual obstacles between remote control and the player.

Do not position the CD player behind tinted glass as it may reduce the maximum range of the remote control.

Remote control functions



CD-270 CD-PLAYER FUNCTIONS:

- (1) Power: Sets the CD-270 in standby mode
- (2) Eject: Opens the CD tray
- (3) 1-10 : Selects desired track for playback
- (11) PLAY/PAUSE: press once for playback. If press during play, the disc is paused. Press one more time for resume play.
- (10) SKIP (I◀◀): Selects the previous track
- (12) SKIP (▶▶I): Selects the next track
- (9) SEARCH (▶▶): Search forward
- (13) SEARCH (◀◀): Search back
- (14)Random: All tracks are played in random order
- (15) Repeat: Repeats a single track or all tracks on a CD
- (16) Stop: Stops playback
- (17) Program: Allows playback of the music tracks on a CD in a certain order

SA-270 AMPLIFIER FUNCTIONS:

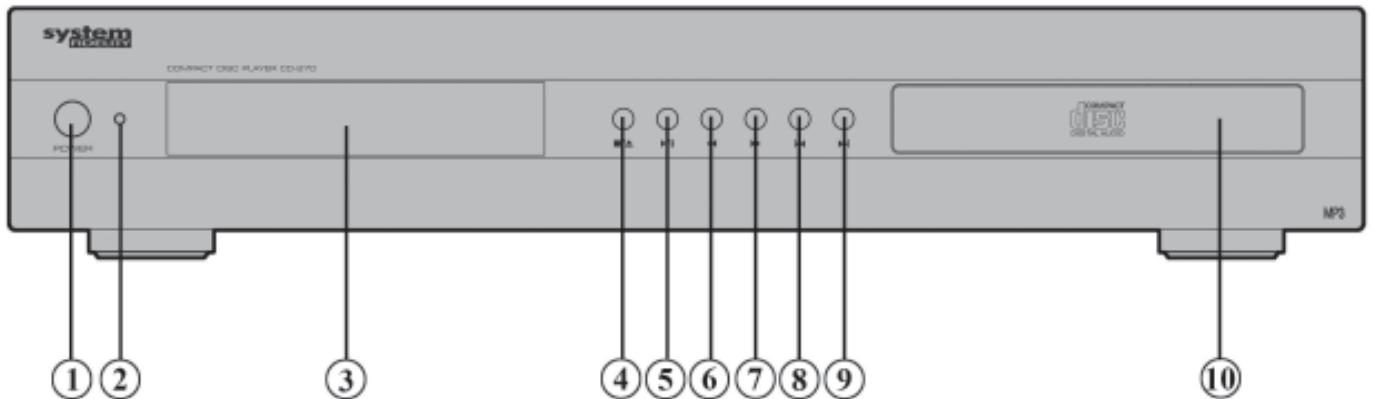
- (1) Power: Sets the SA-270 in standby mode.
- (19-23) Input buttons: Selects input source of amplifier.
- (24) SPKRS A/B: selects which pair of speakers are playing - press once for SPEAKERS A, press one more time for SPEAKERS B, press third time for SPEAKERS A+B
- (25) Function: Adjusts treble/bass level, loudness and balance by means of VOL + and -
- (26) Volume +/-: Adjusts the master volume.

Some of the amplifier functions can only be performed by means of the remote control. Some functions are connected with the selected signal input source. Some buttons on the remote control may therefore not be available if the corresponding signal input source has not been selected.

ST-270 AM/FM TUNER FUNCTIONS:

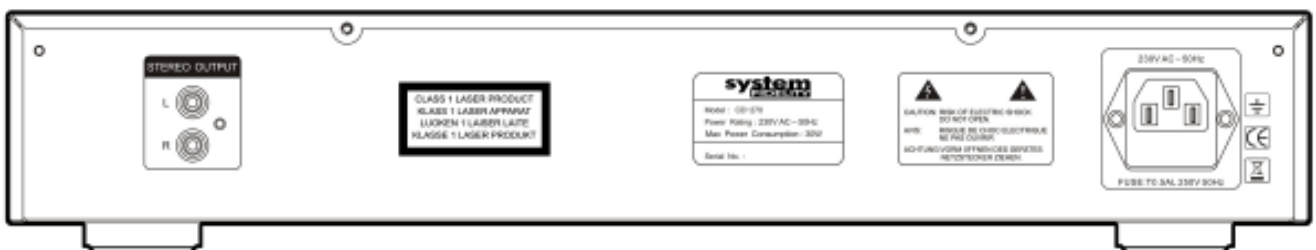
- (1) Power: Sets the ST-270 in standby mode.
- (3) 1-10 : Selects stored stations. If depressed for more than two seconds, a station is stored under the number concerned.
- (4) RDS: Displays RDS and other information.
- (5) AM/FM: press to choose between AM or FM mode
- (6) ST/MONO: press to choose between stereo or mono reception (in case of very weak signal, mono can offer better sound without noise.
- (7) Autotune: Press once to automatic tune in to AM/FM stations. Depress button for two seconds to initiate an automatic search. At FM, the autotune function will search for a station at a higher frequency.
- (8) MEMORY: press to store the tuned station

FRONT PANEL DESCRIPTION



- (1) Mains switch: Used to switch on and off the unit by switching the mains voltage.
- (2) LED indicator: Lights blue indicating that the CD-player is on stand-by mode. Switched off when the CD-player is in operation and LCD display is lit.
- (3) VFD display: main display displaying most of the function performed.
- (4) Stop/Open-Close: Stops playback and with second press opens and closes the CD tray
- (5) Play/Pause: Starts playback at first press and pause playback at second press
- (6) ◀◀ (search back): Search through the track backwards
- (7) ▶▶ (search forward): Search through the track forward
- (8) ◀◀| (skip back): Selects the previous track.
- (9) ▶▶| (skip to next): Selects the next track.
- (10) Disc tray

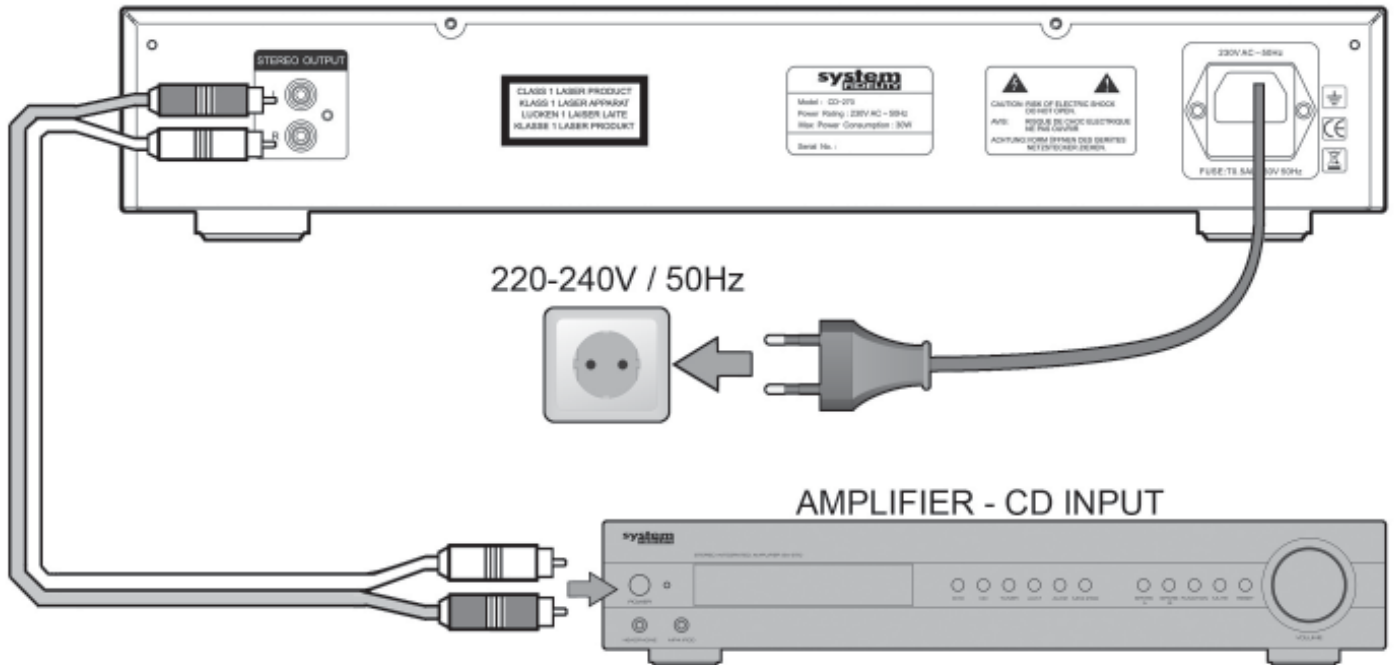
REAR PANEL DESCRIPTION



Stereo Output: Analogue stereo output. For connection to stereo amplifier or receiver with analogue input.

AC input: For connection of mains voltage. Make sure that the plug has been correctly inserted, and that the voltage corresponds to the text printed on the back panel of the cabinet.

CONNECTIONS



Notes:

- When make the connection, please refer to the connection diagram. Make sure that all the units are switched off during any connection. The RCA sockets on your CD-270 are color coded for your convenience. Red and white are RIGHT and LEFT audio respectively. Use high quality RCA-interconnect cables for optimum performance and reliability.

OPERATION AND FUNCTIONS

On, Off and standby

Turn on the unit by pressing the mains switch.

Press the standby button on the remote control to switch to standby

mode. The display will turn off and all functions will be reduced to a minimum to make sure that the unit uses minimal power. When in standby mode the unit only reacts to the standby button of the remote control.

If you wish to turn off the unit to avoid any power consumption, you must press the mains switch.

Protect the environment and turn off the unit after use.

Load a disc

If you want to play a disc, you must load it.

You do that by pressing the eject button on the remote control or on the front panel of the CD player. When the disc has been read, the display will show the number of tracks on the disc and the total playback time.

If there is not disc in the tray, the message "NO DISC" will be displayed. If the unit has trouble reading a disc, you must check if the disc is clean and free it from dirt and scratches. If the disc can still not be played, you must contact your dealer.

Play

Press the PLAY/PAUSE button on the remote control or on the front panel once to start playback. The display will show a small play symbol, which track is played, how long the current track has been playing, and the music calendar will show how many tracks are left.

Pause

Press the ►|| (PLAY/PAUSE) button once more to stop playback. The small play symbol will disappear, and a small pause symbol will be displayed instead.

To continue playback, press the PLAY/PAUSE button again.

Stop/Clear

To stop playback completely, press the ■ (STOP) button once. The display will again display the number of tracks on the disc and the total playback time.

To delete all previous programming settings you must press the STOP button once more.

Previous and next

From the CD track being played it is possible to switch to the previous track or to the next track. If you want to continue to the next track, you must press the ►►I (next) button on the remote control or on the front panel once. If you want to move on several tracks, you must press ►►I until you reach the track desired.

If you wish to go back to one of the previous tracks, you must use the same procedure but not the same button. Use the I◄◄ (Previous) button instead.

Forward and rewind

It is possible to perform a search in the track played. If you wish to search forward, depress the ►► (forward search) button on the remote control until you get to that part of the track that you wish to hear. You will see that the time counter in the display counts up very quickly. If you wish to search backward, use the same procedure as when you search forward, but use the ◀◀ (search back) button instead.

Note:

The search speed will increase the longer you depress the button. When searching, the volume will be lower than usual. The search function can be activated in pause mode, but no sound will be heard.

Random

It is possible to select random play by pressing the RANDOM button on the remote control or the front panel. The CD tracks will be played in random order. The text RANDOM will be displayed when this function has been activated.

It is possible to activate random play both in stop mode and during playback. Press the RANDOM button again if you wish to deactivate random play.

Note:

When you press ◀◀ or ►► during random play, it will not be possible to select the next track but any other track.

Program

The CD-270 can be programmed to play the tracks of a CD in a certain order. Press the PROGRAM button when playback has been stopped. The MEMORY symbol and "Pr p:01" will be displayed. Use ◀◀ and ►► to select the track that you wish to include in the programming and confirm your choice by pressing the PROGRAM button again. This procedure must be repeated until you have selected all the tracks that you wish to hear.

The tracks that have been selected are shown on the display by means of the music calendar. It will also be possible to view the total number of tracks programmed by means of the text "p:09". (P:09 if you have programmed a total of 9 tracks.) Press the PLAY button to start playback. Press the STOP button twice to deactivate the programming function. Then the normal display will return.

Note:

When you press one of the skip buttons, you will select the next track in the programmed order.

Repeat

The CD-270 can be set to repeat one or all tracks of a CD. This is done by means of the REPEAT button on the remote control or front panel.

If you press the button once, one track will be repeated and the message "REPEAT ONE" will be displayed.

If you press the button twice, all tracks will be repeated and the message "REPEAT ALL" will be displayed.

If you wish to deactivate the repeat function, press the REPEAT button for a third time.

Note:

This function can also be used when "Program" has been activated.

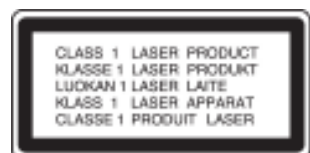
TROUBLESHOOTING

PROBLEM	CAUSE/REMEDY
No power when unit is turned on.	<ul style="list-style-type: none"> - Check that the mains plug has been correctly inserted into the socket. - The internal fuse has blown and must be replaced by a qualified service technician. - The power cord has been damaged and must be replaced.
No sound.	<ul style="list-style-type: none"> - The unit has not been turned on. - Incorrect connection to the amplifier. - No loudspeakers have been connected to the amplifier. - No CD disc in the unit.
The unit will not read the disc.	<ul style="list-style-type: none"> - Check if the disc has been turned upside down. - Check if the disc is clean and undamaged. - If the disc is scratched, replace it with another one.
The unit skips some parts during playback.	<ul style="list-style-type: none"> - Check if the disc is clean and undamaged. - The unit is positioned on an unstable surface.
A buzzing noise can be heard.	<ul style="list-style-type: none"> -The RCA cables between the CD-270 and the amplifier/receiver have been damaged. -The RCA cables between the CD-270 and the amplifier/receiver have been wound around the power cord.

TECHNICAL DATA

Output voltage	0.7V+/-2dB
Frequency characteristics (Reference: 1kHz 0dB)	
20 Hz 0dB	-0.5 dB +/- 1 dB
100 Hz 0dB	0 dB +/- 1 dB
10 kHz 0dB	-0.5 dB +/- 2 dB
20 kHz 0dB	-3.0 dB +/- 2 dB
Channel balance	< 2.0 dB
Separation	> 60 dB
Harmonic distortion (T H D + noise)	< 0.05%
Signal/noise ratio	> 99 dB
Voltage and power consumption	See back panel
Dimensions (WxDxH)	430 x 290 x 75 mm
Weight	4.3Kg

We reserve the right to change the technical data and the design of the product without notice as a result of further development.



CONSUMER NOTICE:

The System Fidelity product you have purchased is subject to Directive 2002/96/EC of the European Parliament and the Council of the European Union on waste electrical and electronic equipment (WEEE) and, in jurisdictions adopting that Directive, is marked as being put on the market after August 13, 2005, and should not be disposed of as unsorted municipal waste. Please utilize your local WEEE collection facilities in the disposition of this product and otherwise observe all applicable requirements.



system
FIDELITY

For further informations please visit our web site:

www.systemfidelity.com